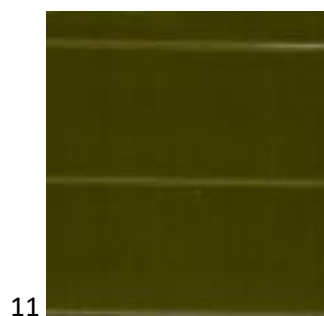
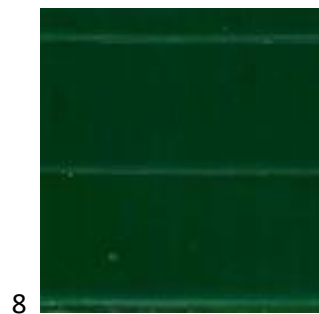
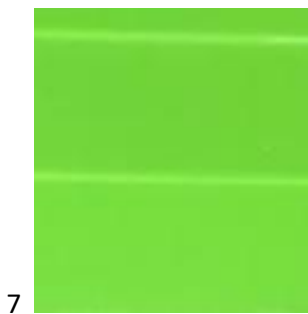
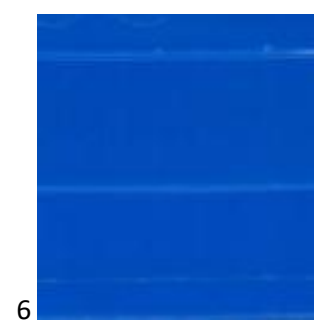
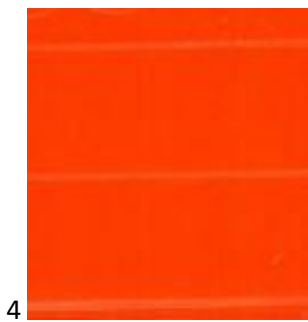
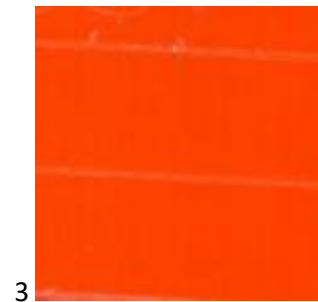




COLORES PARA ROTOMOLDEO





Nº DE PROBETA

CODIGOS DE MASTERBATCH

- 1-----2512 (AMARILLO)

- 2-----27652 (AMARILLO)

- 3-----C65 (NARANJA)

- 4-----420867 (ROJO)

- 5-----1637 (CELESTE)

- 6-----027879C (AZUL)

- 7-----420885 (VERDE)

- 8-----421585 (VERDE)

- 9-----024528 (BEIGE)

- 10-----421706 (BEIGE)

- 11-----421711 (VERDE MILITAR)

- 12-----421634 (GRIS OSCURO)

